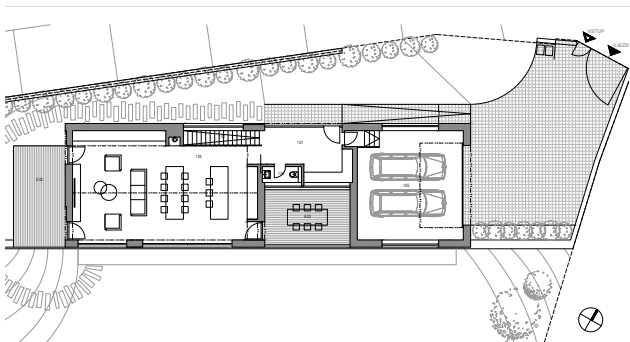
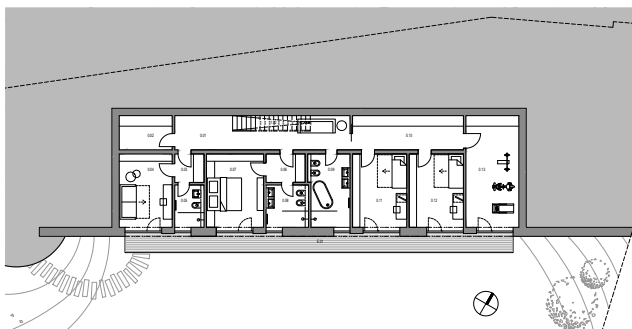


Spec homes - ZAHOŘANY NEAR BEROUN

SKY LINE PANORAMIC 235/29

29 890 800 CZK (incl. VAT)

Two-storey house with **6 rooms** usable area of **324 m²** on a plot of **1.124 m²**.



FIRST FLOOR		
#	Room	m ²
0.01	STAIR HALL	21.6
0.02	TECHNICAL BACKGROUND	6.8
0.03	CLOAKROOM	3.4
0.04	WORKING HOUSE / BEDROOM HOST	15.1
0.05	BATHROOM	4.4
0.06	CLOAKROOM	4.4
0.07	PARENT BEDROOM	16.2
0.08	BATHROOM	6.5
0.09	BATHROOM	10.8
0.10	CLOAKROOM	14.9
0.11	BEDROOM	15.5
0.12	BEDROOM	15.5
0.13	FITNESS	22.8
TOTAL		178.8
E.01	TERRACE	27.9

SECOND FLOOR		
#	Room	m ²
0.01	ENTRANCE HALL	16.2
0.02	STAIRCASE	4.4
0.03	LIVING ROOM WITH KITCHEN	76.7
0.04	WC	2.2
0.05	GARAGE	46.4
TOTAL		144.8
E.02	TERRACE	20.9
E.03	TERRACE	18.6

